



The Orchestra

THE organized orchestra this year continued to add to the interest of the high school assemblies by playing at almost every such gathering. The fifty students under the direction of Miss Hughes respond well to her excellent directing, and the music improves in quality each year. Occasionally in Miss Hughes's absence, Wilbert Holloway waddled the baton in acceptably manner; Marjory Hayes acted as accompanist at the piano. Among the new instruments added this year were a bassoon and two saxophones.

Only one member represented the organization in the national orchestra at Chicago in March; this was Gale Hubbard, who plays the trombone.

The public was given an opportunity to hear what the orchestra could do at the school concert in January. It played the following difficult selections with a precision and finish which brought it much commendation: "The Swan," by Saint-Saens, and "Pomp and Circumstances," by Elgar.

At the State Music Association meeting held at Ann Arbor May 1 and 2, the orchestra was honored by having seven of its members selected to play in the all-state orchestra. They were Elvira Lehmlinger, violin; Mary Spaulding, cello; Alvin Davis, trombone; Oscar Paul, first trumpet; Charles Anderson, second trumpet; Emerson Kasopf, clarinet; and Wilbert Holloway, euphonium.

As the junior high schools furnish more and more trained instructors for the high school orchestra there is every reason to suppose that it will still further increase in numbers and quality of music, and that the public will be given more frequent chances to hear what it can do.

The orchestra is a very important part of the school program. It has been growing steadily since its organization in 1918. It has many members and plays a wide variety of music. It has been very successful in its performances and has received many prizes and awards. It is a great credit to the school and the community.



The Orchestra

THE most significant change in the orchestra this year is that five songs have been added and four violins used for the first time in several years. Out of fifty members in all, twenty-five play string instruments, and as these are meant to be in performance in an orchestra, the proportion is correct.

The orchestra has played during the year for assemblies, the Parent-Teacher Association, the Home Depart, The Women's Club, the annual concert, and the state contest in May. Uniforms are now worn by the members, the girls wearing black jackets trimmed in white over white dresses, and the boys dark suits and white trousers.

The members of the orchestra have given more time to its development than most people realize. Besides the time spent outside of school by the individuals, they have played together the first hour every school day. The response shown by the students indicates an increasing interest in music. It is hoped that in time the members will receive letters for their work. Mr. Chaugson, who this year succeeded Miss Higley as director of the orchestra, believes that a higher standard is being maintained as the ability of the players increases.





First Row: Theodore Lee, William Reed, Joseph Christian, Milton Wilson, Paul Brown, Charles Harris,
 Norman Hubbard, Gene Miller, Harold Brown, Virginia Swanson.
 Second Row: Allan Pinsky, Warren Brown, Theobald Jankowski, Earl Sawyer, Frank Taylor, Elton
 Lindstrom, Walter White, Stephen Charles, Frank Johnson.
 Third Row: Samuel Smith, William Harty, Bill Elliott, Tom Barber, Ruth Miller, Virginia Woodford,
 Joseph Johnson, Elmer Grant, George Fox.
 Fourth Row: Clark Ross, John Ray, Alex Miller, W. Chapman, Harpoy Johnson, George Nelson.
 Fifth Row: Earl Anderson, Glenn Reed, Lester Gillman, James Swisher, Margaret Forsythe, Robert Tack.

The Orchestra

AN organization of extreme importance to the life of the high school is the orchestra. Under the direction of Mr. Champion for the last ten years it has grown and flourished, and there were few school functions during the past year at which the members did not appear. They played at every assembly, at Commencement, and at the State Teachers' Convention; but their most outstanding achievement was at the Washington B-Centennial Pageant. Playing through seven performances in two days, they rendered a program of inspiring and appropriate music without which the celebration would have been sadly crippled.

A picked group played for the Christmas pageant and at the Michigan League in the fall. Four representatives were sent to the National High School Orchestra in Cleveland: Margaret Forsythe, violin; George Helbois, bass; Edwin Lehdinger, viola; and Owen Reed, cornet.

OFFICERS

President
 Secretary-Treasurer
 Business Manager
 Librarian
 Director

OWEN REED
 HARRY BEAT
 JOHN RAY
 HARVEY JENSON

MR. WILLIAM R. CHAMPION

THE ●MEGA



First Row: George Johnson, Donald Miller, Elmer Johnson, James Brown, Edward Paul,
 Donald Ross, Ben Knappman, Guy Miller, Milton Olson, Eugene Wilhelm, Howard Green, Richard Smith, Ward Tucker,
 Elmer Ross, Charles Morrison, James Morrison, Ruth Miller, Owen Reed, Elmer Schmittner, Harvey Johnson, Adolph
 Smith, Walter Ross.
 Second Row: James Johnson, Walter Miller, Virginia Reed, Charles Johnson, Dr. Peterson, Maurice Wilhelm,
 Frank Ross, Eugene Paul, George Miller.
 Back Row: Clark Ross, Ann Swartz, Eugene Rychnicki, Dorothy Bell, Ruth Miller, Richard Mann, Virginia
 Woodford, Howard Johnson.

The Orchestra

AMONG the musical organizations the orchestra is of course the most important because it is the backbone of the musical structure. During the past few years the Ann Arbor High School Orchestra has been very active in school life, but it has never been more so than this year. Although it has not grown in size, it has made great strides in the quality of the music which it has rendered.

As is usual the orchestra played for assemblies, Commencements, the Honor Banquet, Senior and Alumni Banquets, and various other activities. Highlights of the year were the "Musica Feroza," and the Annual Spring Concert. It was especially honored by being asked to appear on the program in RIT Auditorium for the awarding of the Order of the Purple Heart.

A feature which has proved very popular with the school is the string quartet, which has played on various occasions with much success. This quartet is composed of Richard Mann, Eugene Rychnicki, Elmer Johnson, and Margaret Forsythe.

Ruth Miller, Elmer Johnson, Alex Miller, and Margaret Forsythe played in the All-State High School Orchestra during the summer of 1932 at Interlochen, and several others are planning to attend in 1933.

Paul Severson



The new-Detroit South, Gerald Vandenvert, Kenneth Matthews, William Parkinson, Donald Cavertine, Bruce Parsons, Colin Kalden, Don Hagan, Bert Latta, Albert Daly, Keith Day.
 Fourth row—Sylvia Widdell, Roland Brandt, John Wallace, Beverly Farrow, Mary Lou Hill, George Schlegel, Ronald Rowland, Kirk Egan, Donald Taylor.
 Third row—Harvey Hawthorn, Donald Hart, Maurice Parsons, Maurice Edmund, Elaine Wood, Dorothy Hill, Elizabeth Wrenn, Olga Rolpin, Harold Sells.
 Second row—Virginia Smith, M. Champion, Mary Smith, Jean Marie Nantz, Olga Graf, John Jacobson.
 Bottom row—Joe Wrenn, Julia Nelson, Virginia Radford, Mary Canberg, Clyde Hunt, Elsie White, Janet Killion, Virginia Bueche, Natalie Peterson, Anne Wilson, Margaret Marshall, William Johnson.

THE ORCHESTRA

THIS YEAR the orchestra has improved over last year, both in scope of work and in quality of playing. It is now in its fifth year and has increased to an instrumentation of forty-five pieces.

Through a change in the high school program it has been possible for the orchestra to meet five days a week instead of three, as it did previously. Mr. Champion has also established a technique class, so that students can become more proficient in the use of their instruments. This accounts for much of the improvement over last year.

The orchestra was invited to broadcast over a Detroit radio station on March 8. The selections played were "Tchaikovsky Suite," "Blue Danube Waltz," by Johann Strauss, "Intermezzo" from the "L'Arlesienne Suite," by Bizet, and a selection from "Sullivan's Operatic Gems." A violin solo, "Hymn to the Rising Sun," by Kennedy-Karadon was played by Mary Ann Canberg, with Roland Brandt accompanying.

The string quartet and the woodwind quartet, divisions of the orchestra, also made much progress this year. The quartet was composed of Richard Mann, Mary Ann Canberg, Beatrice Parsons, and Elsie White. The quintet was composed of Wenzel Christman, Alex Miller, George Brown, Roland Brandt, and Bill Parkinson.

A few of the selections played by the orchestra during the year were "First Symphony" by L. van Beethoven, "Bohdan" by Mousskowsky, and "Finlandia" by Sibelius.



Top Row: Gerald Westworth, Bob Simmons, Reg. Howell, Donald Hoff, Peter Van Scherpe, Earl Wheeler, Mr. Champion
 Second Row: Kenneth Mathews, Robert Harrison, Lewis Hill, Robert Ringrose, Elbert Taylor, Frank Anderson
 Third Row: Isaac Carhart, Virginia Rusche, Nila Egan, Mary Stokeman, Martin Farmer, Dagnar Jamison
 Bottom Row: Betty Ivanoff, Anne Hansen, Ida Mae Stitt, Virginia Hoff, Betty Bush, Virginia Hoff, Virginia Hansen

Orchestra

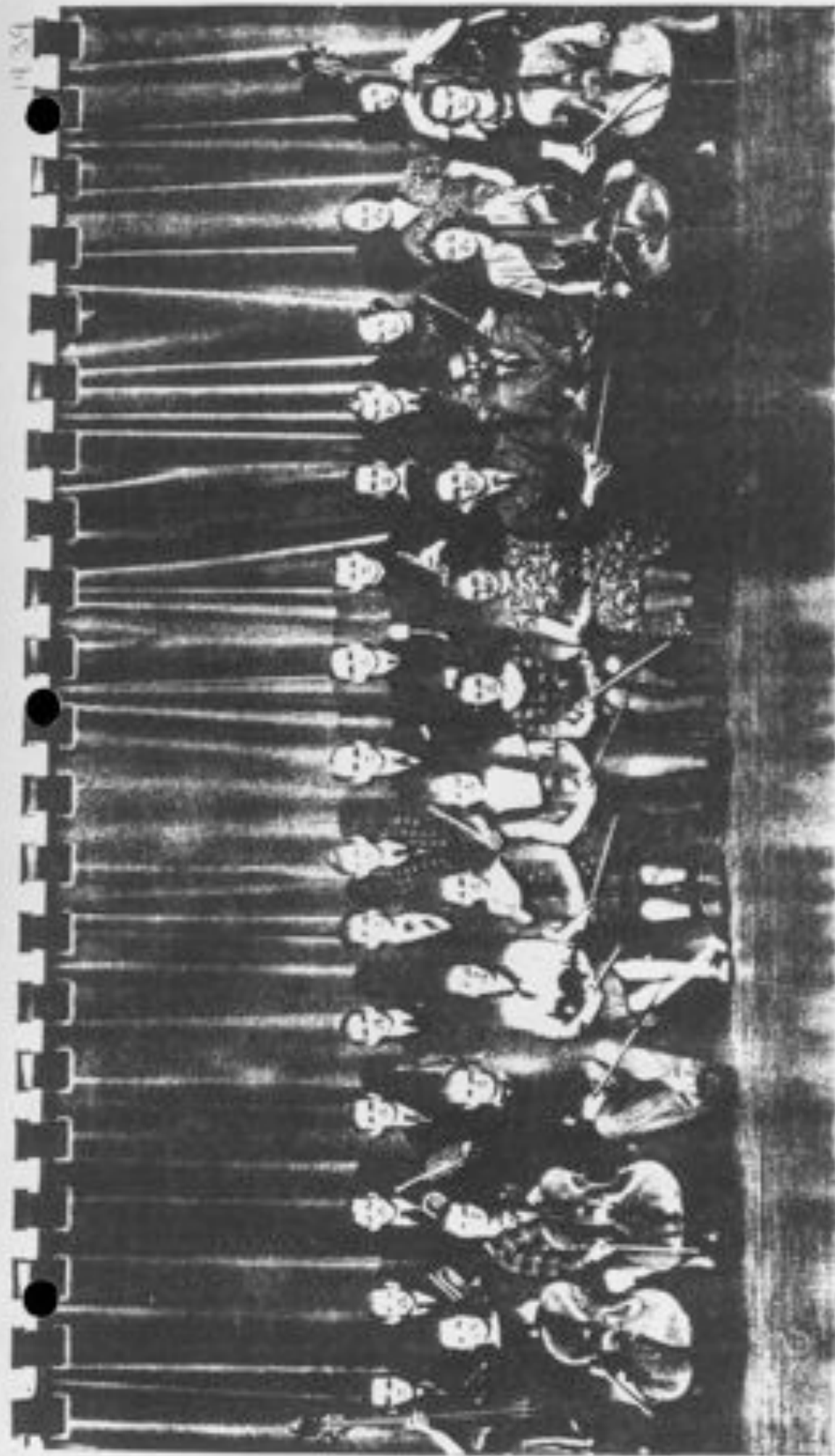
ONE of the most prominent organizations of the Ann Arbor High School is the Orchestra under the direction of Mr. Champion.

With the completion of the new Pattenhall Auditorium the Orchestra was again able to appear in school assemblies. The members deserve praise for their fine playing at the Honor Banquet, the Senior Play, Class Day Exercises, and Commencement. Those who played for the Junior Play were Kenneth Mathews, Anne Hansen, Gerald Westworth, Herman Smith, Virginia Rusche, Ida Mae Stitt, and Elsie Wille. The Senior Play orchestra was made up of Anne Hansen, Betty Ivanoff, Peter Van Scherpe, Gerald Westworth, Virginia Hoff, Ida Mae Stitt, Dagnar Jamison, Virginia Rusche, and Herman Smith. A larger selected group played for the "Chimes of Normandy," the annual operetta.

On several of their appearances in assemblies, members of outstanding ability in music played solos. Among these were Kenneth Mathews, who played the flute; Anne Hansen, who played the violin; and Donald Casterline, who played the cornet. A selected group, including Kenneth Mathews, Dagnar Jamison, Anne Hansen, Elizabeth Ivanoff, Peter Van Scherpe, Albert Travis, and Herman Smith, played in the Southeastern Band and Orchestra Festival on May 22.

The string quartette, made up of Anne Hansen, Betty Ivanoff, Virginia Hoff, and Dagnar Jamison, as well as some of the other members of the Orchestra, took part in the Solo and Ensemble Festival. At this festival Anne Hansen won first division in the violin group. Later in the spring, the Orchestra played at several functions in the junior high schools.

The final appearance of the Orchestra was on June 18 at the Commencement exercises, this completing a very successful year.



THE ORCHESTRA

TOP ROW: Selma Ross, Malcolm Albee, Jerome Kough, Virgil Decker, Edward Johnson, Martin Schlenker, Ray Middelton, M. Champion, Donald Merstead, Peter Van Scherpe, Lawrence Zeeb, Robert Moon, Elizabeth Grimes, Annetta Verner, Betty Kempfert.

BOTTOM ROW: Marjorie Bushnell, Beatrice Griffith, Robert Sorens, Betty Blewman, Mary Harris, Elizabeth Swartzell, Patricia Felber, Carolyn Burt, Elliott Travis, James Terrill, Virginia Hoff, Betty Roach.

Act 3 Scene 1

Orchestra



TOP ROW—Jack Keller, Richard Blake, Bert Owen, Robert Shatta, Gerrit Graham, Malcolm Albee, Marjory Hall, William R. Champion.

SECOND ROW—William Winstley, Lee Williams, Elmer Porter, Lee Nichols, Tom Stout, David Soule, Loren Brooks, Christine Erch.

THIRD ROW—Marjory Cornell, Evelyn Buchanan, Eugene Churchill, John Eskimoben, Edward Champion, John Eskimoben, Gordon Soule.

FOURTH ROW—Pat Fisher, Phyllis Brooks, Lois Knight, Beatrice Griffith, Geraldine Boudel, Bernice Gilman, Jacqueline Carl, Betty Skelton, Joyce Wilson.

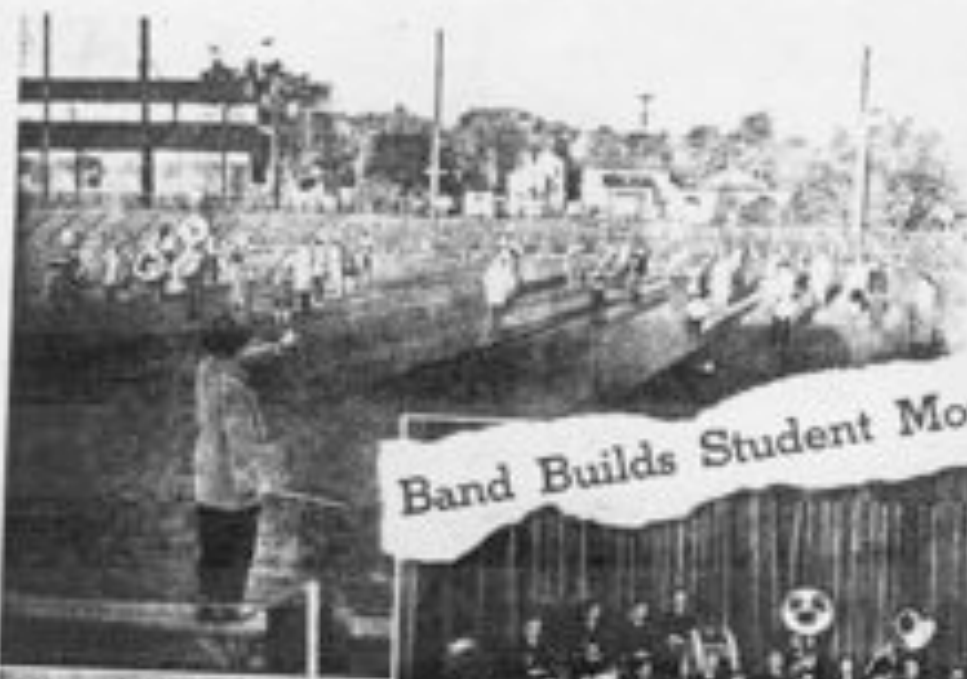
STAGE MANAGER—Mr. Champion, in addition to directing the band, has charge of the orchestra which this year has shown a marked improvement over the orchestra of past years.

In the district festival the orchestra was a second division group, only being surpassed by Hamtramck.

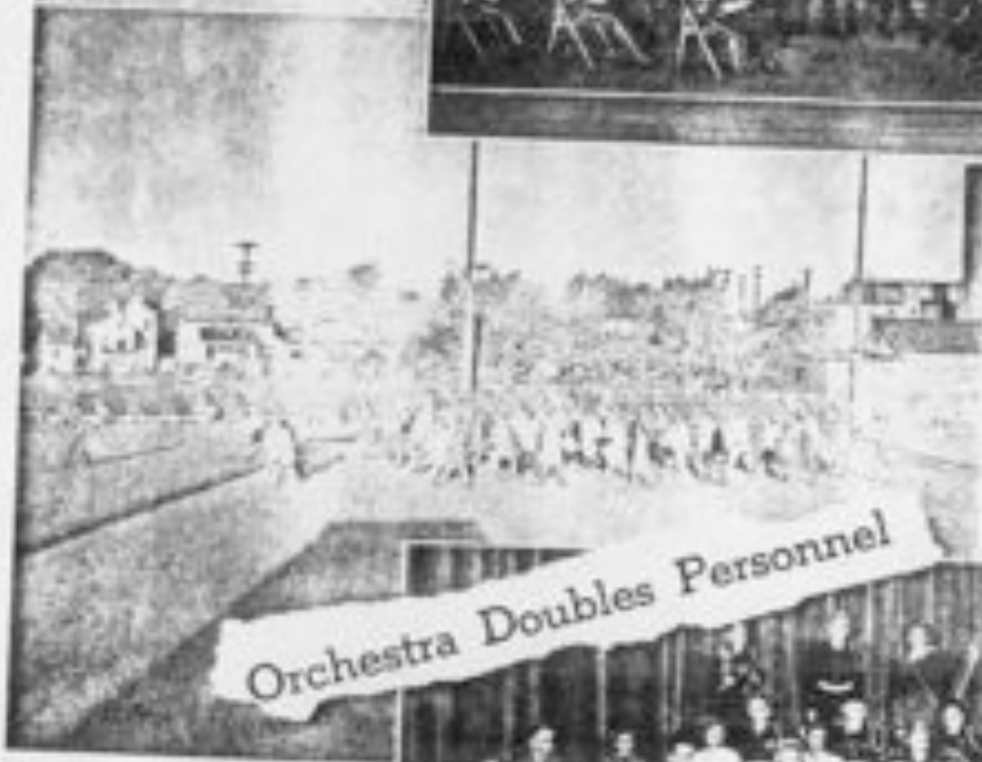
The participation of some of the members in music classes and camps helped to develop the orchestra as well as the formation of ensembles within the orchestra.

The orchestra made a notable contribution to many school functions and its work was greatly appreciated.





Band Builds Student Morale



Orchestra Doubles Personnel



BAND

For the second year, the band has been under the direction of Mr. E. Rollin Siffes, who taught music in Battle Creek High School before coming to Ann Arbor. He earned his A. B. and M. A. degrees at the University of Michigan.

The officers elected for this season were Garrett Graham, president; Marjory Hall, vice-president; Jackie Carl, secretary; and Loren Brooks, student conductor. The appointive positions were filled as follows: librarians, Phyllis Brooks, and Betty Wilkinson; equipment crew, Walter Metzger, Harold Prochnow, Andy Bierlein, Norman Beck, and Bob Ambruster; uniform managers, Ben Wheatley, Ruth Reckle, and Paul Mason. And, of course, there were the official window-openers, since in every rehearsal, Mr. Siffes says without fail, "It's getting hot in here, boys." They were Bob Ware and Harold Prochnow.

The football band, known for its fast marching tempo, was rained out of all but two of the games. Because of transportation difficulties, the marching band was not able to make its customary trip to an out-of-town game. The small "pep band" made its appearance at each basketball game under the direction of Ben Wheatley.

The band gave its annual spring concert in March, as well as playing for several assemblies throughout the year. Its contribution to morale-building included several performances at send-offs for draftees, participation in the Armistice Day parade, and a parade for the Second War Loan Drive in April.

They had fun too, with a party after the last football game, a winter sports outing in January, and a picnic in the late spring. There's a feeling of comradeship among band members! When one meets another, he always gives the traditional friendly greeting, "Hello, grusome!" or "Hi, bag!"

ORCHESTRA

Though meeting for rehearsal only once a week, the orchestra played a very successful season. It provided overture and entr'acte music for both the senior and junior plays. The strings participated in a 100-piece string orchestra made up of players from all the city schools which performed for the Michigan Band and Orchestra Association clinic in February and repeated its program for the Michigan Schoolmasters' Club in April.

All members of the high school group were invited to join with the Ann Arbor Civic Orchestra in playing for the Civic Music Night in March. The full orchestra, augmented by string players from the grade schools and junior highs, played for the city music festival which followed the May Festival.

Great progress was shown this year, largely because of the enthusiastic conducting of Miss Elizabeth Green, new to Ann Arbor from Waterloo, Iowa.

BAND

Front row: L. Brooks, G. Graham, B. Wheatley, R. Steinke, A. Bierlein, R. Keller, B. Steinke, P. Brooks.

Second row: T. Stout, C. Hall, W. Grimes, R. Clarke, G. Shanklin, R. Stuckman, R. Gibson, R. Reckle, W. Penn, D. Schmidt, P. Fisk, P. Mason.

Third row: W. Spencer, R. Phillips, J. Schosser, B. Smith, B. Wilkinson, B. Pannabecker, M. Auerman, W. Johnson, D. Kautzer, D. Eastman, M. Hill, J. Carl, B. Grimes, M. Beck, R. Ambruster, R. Cooper, W. Metzger.

Fourth row: R. Ware, D. Beck, H. Prochnow, W. Cuthbert.

ORCHESTRA

Front row: J. Kuhnaker, G. Shanklin, L. Townter, P. Brooks, R. Keller, C. Hall, T. Stout.

Second row: G. Jellena, M. Cornell, E. Page, A. Perkins, R. Hamilton, V. VanCleave, B. Grimes, B. Smith.

Third row: L. Brooks, B. Wheatley, D. Eastman, M. Hill, W. Metzger, R. Reckle, W. Penn, P. Mason.

Fourth row: R. Ware, C. Pryor, R. Rogers.

HUFFERS AND PUFFERS JOIN THE BAND

A band is a musical tradition in almost every high school. Without a band a school would not have much spirit. Under the able leadership of Mr. Charles M. Yates, our band has keyed Ann Arbor High morale to match our winning football team. Contributing much to this boost of loyalty were our very attractive twirlers, headed by rhythmic Ben Wheatley. Majorettes Barbara Gates, Yvonne Willis, Martha Church and Lollie Jones did some very nice high stepping indeed.

After the football season rolled by, basketball fans were entertained and stimulated by the volunteer pep band under the direction of student conductor Ben Wheatley. Between these workouts at the games, the entire band played for P.T.A. bond rallies, junior high school assemblies, two complete Ann Arbor High School assemblies, two public concerts, and the May Festival in Hill Auditorium.

Band members were duly rewarded for their arduous activities, for they won five All State Band positions. The five winners were: Paul Mason, William Penn, Bradley Stevens, Williametta Spencer, and Jack Grimston. The group also won two firsts, Charles Pryor and William Penn, and two seconds, Williametta Spencer, and Paul Mason, in the Highland Park Solo and Ensemble competition.

This unusual record of accomplishments was undoubtedly due in part to the efficiency of the officers: President, Ben Wheatley; secretary, Barbara Smith; treasurer, William Penn; librarians, Darlene Ecklinman and Betty Jean Pannabecker; and managers, Walter Metzger, Charles Pryor, and William Penn.

ORCHESTRA

Under the enthusiastic direction of Miss Green, Ann Arbor High School has the largest orchestra that it has had for several years. Part of the group, the string section of about twenty people, met every day.

The orchestra has played for both the senior and junior plays and for the operetta. A massed orchestra, composed of groups from all the high schools in southeastern Michigan, played in the spring.

This year's officers were Celeste Ruby, president; Genevieve Shanklin, manager; and Mary Ann Graham, treasurer.

BAND (top picture)

Twirlers, left to right: M. Church, B. Wheatley, L. Jones.

Front row: H. Keller, B. Stevens, J. Lyons, N. Goodenough.

Second row: B. Updegraves, B. Cooch, B. Pannabecker, D. Marshall, D. Schmidt, P. Mason, B. Cuthbert, D. Kaercher, J. Kiser, W. Penn, N. Reed, H. Smith, R. Fishbein.

Third row: R. Phillips, B. Stephens, D. Ecklinman, D. Calloway, A. Strongman, W. Spencer.

Fourth row: J. Cheyne, J. Grimston, W. Metzger, T. Johnson, M. Alexander, E. Grimes, F. Thomas, F. Teichert.

Fifth row: G. Breen, H. Robinson, D. Mulford, G. Whinnay, D. Swift, H. Prochaska, C. Pryor.

ORCHESTRA

First row (sitting): Violin: G. Shanklin, L. Torsley, M. Harford, B. Hamilton; Flute: B. Stevens; Oboe: R. Fishbein; Cello: A. Sans, B. Smith; Viola: L. Wagner, C. Ruby.

Second row (sitting): Violin: M. Edwards, B. Yarnall, M. Johnson, J. Carey; Clarinet: B. Pannabecker, R. Calloway, J. Wolf, W. Spencer; Bassoon: S. Pines, A. Strongman, O. Ecklinman; Cornet: W. Penn, P. Mason, D. Kaercher; Trombone: W. Metzger; Cello: D. Westworth; Viola: J. Smith, E. Larnee, G. Turner.

Third row (standing), left to right: Basses: C. Coghlan, M. Graham, C. Pryor; Piano: D. Hillinger; Timpani: C. Meyers; Conductor: Miss Green.

ORCHESTRA

ORCHESTRA

Row 1—Genevieve Maucklin, Lewis Tansley, Curtis Kemp, Nancy Bell, Lillian Wagner, Dorothy Katchler, Paul Penn, William Penn
 Row 2—Mary Edwards, Marjorie Hartman, Richard Lammie, Genevieve Brown, Alice Sims, Martha Wells, Leona Turner, Elizabeth Lammie, Sylvia Wood, Joan Lyons, Dick Galligan, Jack Gutmann, Stanley Pined, Darlene Eschman, Donald Ott, Margaret Alexander
 Standing—Mary Graham, Mia Lyons, Robert Warr, David Hillinger, Charles Meyers

BAND

Row 1—Elizabeth Bonkman, Harold Prockman, Albert Hertz, Robert Elliott, Harry Hawkins, Eugene Brown, Charles Meyers
 Row 2—Darlene Eschman, Lily Laughlin, Jack Gutmann, Ed Gimes, Richard Galligan, James Baker, Gilbert Whitney, Frank Trachsel, Jerry Kirtz, Ann Emmick, Corrine Flouath
 Row 3—Sylvia Wood, Jo Ann Lyons, Paul Thomas, Robert Nelson, Charles Dwyer, Dorothy Katchler, William Penn, Robert Gibson, Margaret Alexander, Leona Wells, Bud Marshall
 Row 4—Mr. Clarence Yates, Leighann Anderson, Joe Penn, Tom Whaley, Paul Mason, Donald Ott, Robert Duvain

DRUM MAJORS

Leona Wells, Robert Duvain
 Steve Scottman

MARCHING BAND

Row 1—Margaret Alexander, Paul Mason, Robert Nelson, Leona Wells, Donald Ott
 Row 2—Tom Whaley, Robert Gibson, James Baker, Darlene Eschman, Joe Penn
 Row 3—William Penn, Dorothy Katchler, Beverly Dwyer, Jerry Kirtz, Bud Marshall
 Row 4—Robert Elliott, Elizabeth Bonkman, Harold Prockman, Eugene Brown, Charles Meyers
 Row 5—Alice Hertz, Harry Hawkins, Gilbert Whitney, Charles Dwyer, Leona Turner
 Row 6—Frank Trachsel, Ed Gimes, Jack Gutmann, Lily Laughlin, Corrine Flouath
 Row 7—Jo Ann Lyons, Richard Galligan, Stephen Hand, Leighann Anderson, Paul Thomas, Ann Emmick
 Row 8—James Robert Duvain

The orchestra, growing steadily under the capable banner of Miss Elizabeth Green, turned in a number of fine performances during the year, which added greatly to the musical reputation of Ann Arbor High. In January a concert was given with Genevieve Maucklin, concert-mistress, and Bill Penn, cornetist, as soloists. Several members of the string section entered in the Southeastern Michigan Solo Contest and won high ratings. Laurels went to Alice Sims who won first place in cello, Lillian Wagner who won first place in viola, and Marjorie Hartman and Mary Edwards who tied for second place in violin. The orchestra played for the King-Secley show which was given to raise money for the infantile paralysis fund and played an important part in the annual all-city May Festival program at Hill Auditorium. Without doubt the highlight of the year was the outstanding performance of this group in the operetta which contributed greatly to its success.

BAND

The Band, Ann Arbor High's melodious morale builder, spent an enthusiastic year under the able banner of Mr. Charles Yates. The band played for many programs: assemblies both here and at other schools, athletic events, and at the presentation of the Navy E to the Hoover Ball and Bearing Company. They also played in the annual all-city May Festival program. These activities were climaxed by the biggest social event of the year (at least in the eyes of our hard-working assistants) the annual band picnic at Whitman Lake in June.

The officers for the group this year were president, William Penn; secretary, Jo Ann Lyons; treasurer, Bob Gibson; librarians, Darlene Eschman, Beverly Dwyer, and Dorothy Katchler; uniforms manager, Bill Penn; equipment managers, Charles Meyers and Bud Marshall. All these promising musicians contributed to the fine performances of the band. In the Southeastern Michigan Solo and Ensemble Festival held at Gross Pointe, Bill Penn, first chair cornetist of the band, and Charles Meyers, drummer, won first division ratings.

All in all the band seems to have added greatly to the life of the school with its lively strains. The soaring music of the pep band under student conductor Bill Penn contributed much to the enjoyment of the fans at all the ball games.